



HOME of your  
OWN

A FULLY INCLUSIVE  
COMMUNITY

Loveland Center™



“There is no more effective way to rein in inflation than to expand the supply of affordable housing and increase housing affordability.”

Mark Zandi, Moody Analytics Chief Economist

Nancy,

Thank you for advocating  
for individuals with  
intellectual and  
developmental disabilities!  
You will forever be in our  
hearts!



# HOME OF YOUR OWN

\$25,000,000 campaign for the expansion of Loveland Center's residential campus. New houses and apartments will give low-income seniors, individuals with disabilities, and partner families in our community more space to thrive.



# OUR MISSION OUR VISION

## Loveland Mission

To help individuals with intellectual  
and developmental disabilities live  
their lives to the fullest.

## Our Vision

A world where all people, regardless of their abilities  
or economic status, are seen and treated as equals  
at home and in their community.



3 counties



50 staff



4 locations



7 programs

Founded in 1962,  
Loveland now serves  
more than  
500 children and adults  
every day throughout  
Charlotte,  
Manatee, and Sarasota  
Counties.



500 Participants\*



480 weekly activities



\*3% of all eligible Florida individuals with I/DD

**\$2,249**

Median monthly rent in  
Sarasota County  
(Sarasota Magazine,  
March 2022)

**100**

Number of people on  
waitlist at Venice Housing  
Authority

**WHERE  
WE ARE  
NOW**

**15**

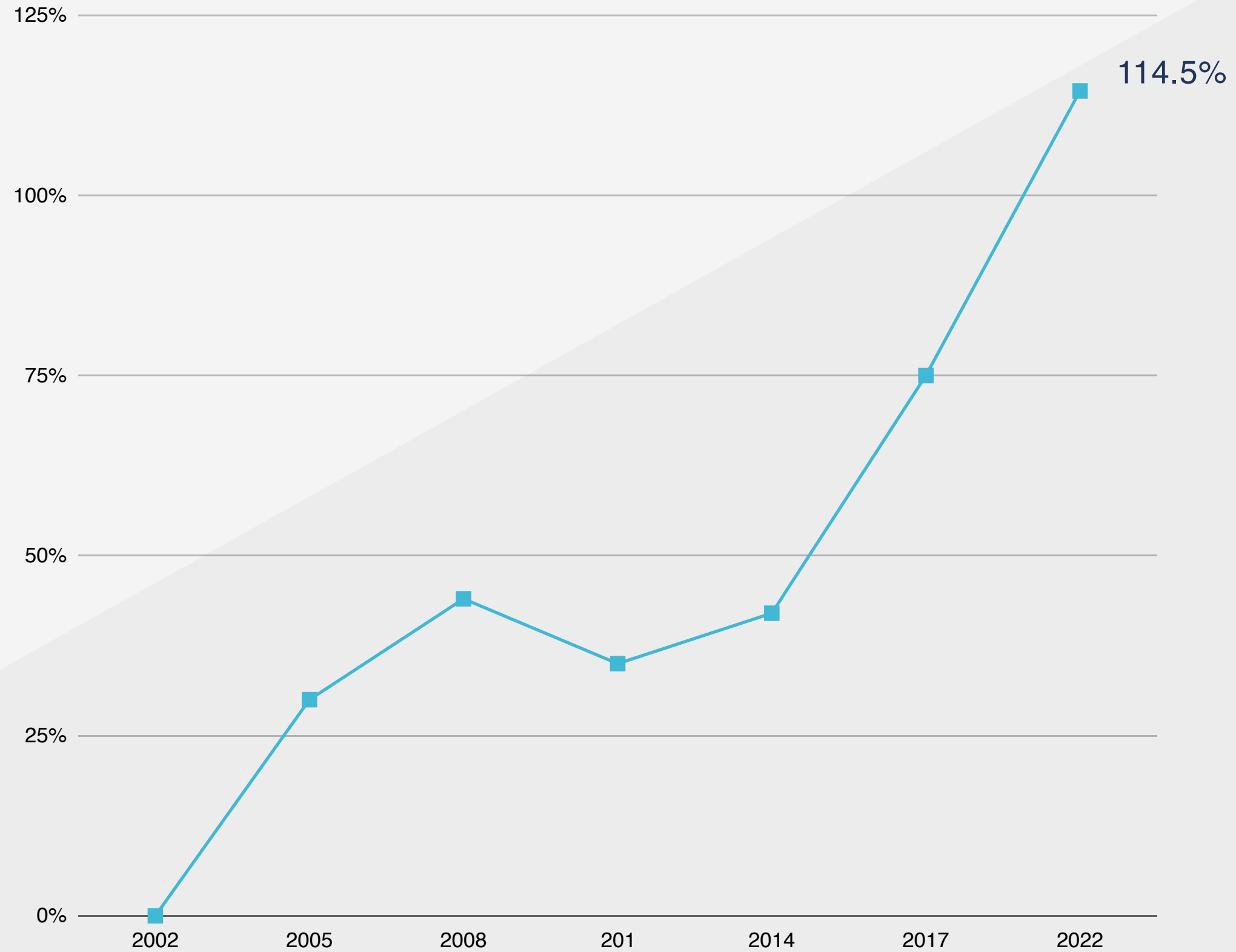
Number of partner families  
on waitlist at Habitat for  
Humanity South Sarasota  
County

**125:12**

Number of people and years  
on waitlist for Nancy Detert  
Residences at Loveland  
Village

# WHERE WE ARE NOW

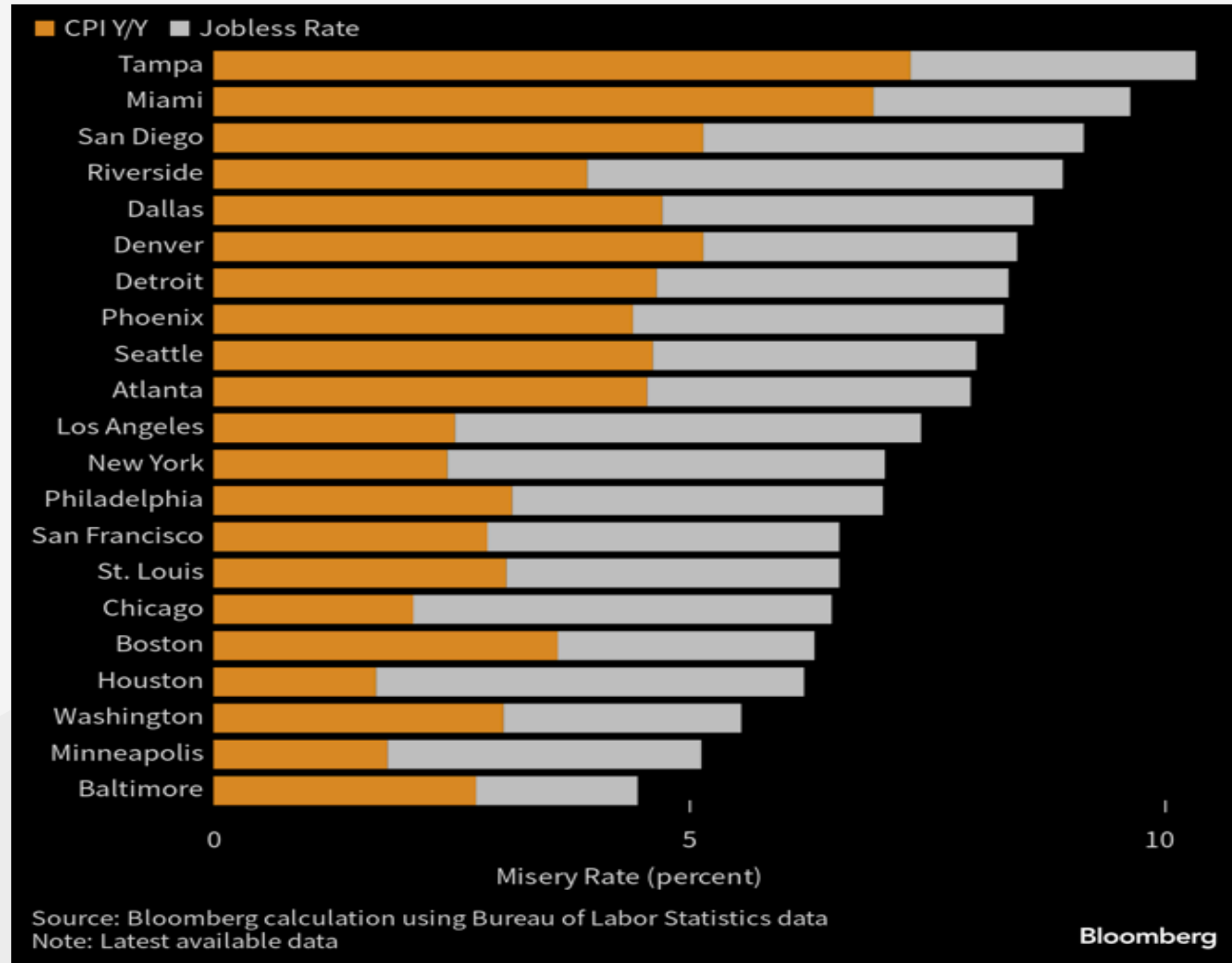
Aggregate House Price Index % Change





# WHERE WE ARE NOW

Inflation (orange) to Jobless (gray) "Misery"  
Rate





# ECONOMIC IMPACT

8.2% community members with disabilities in Sarasota County

Construction labor income \$7.2M

Value added \$19.5M

Output \$53M, according to EDC

\$1,267,980 annual benefit to community

\$63,699 median annual household impact

30-40 additional staff at \$32M in annual salaries by 2036

15 additional individuals with IDD employed





# OUR QUEST

Bring **visibility** to **disability** to ensure a more equitable and inclusive community for all.

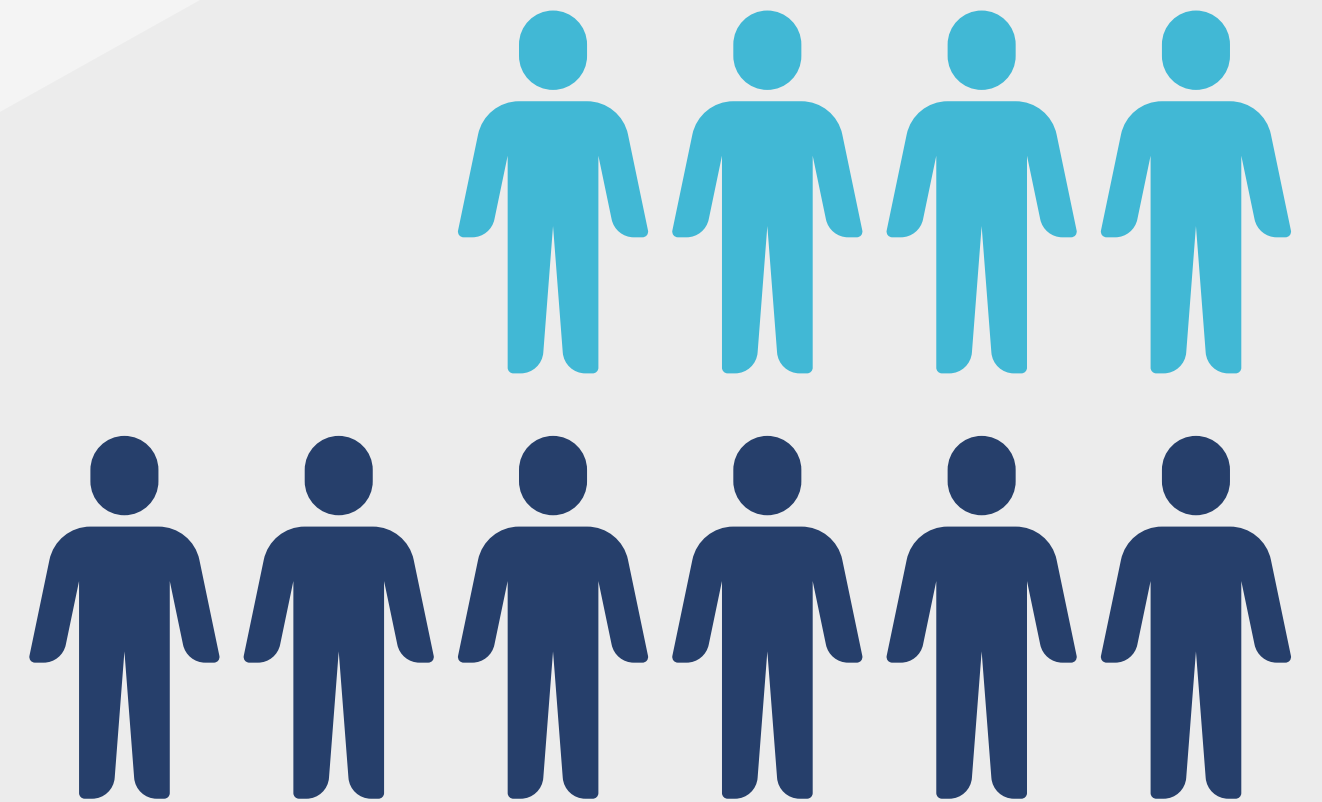
## 122 residential units

- 19 two- and three-bedroom duplex villas
- \$500 per month 30-year fixed mortgage



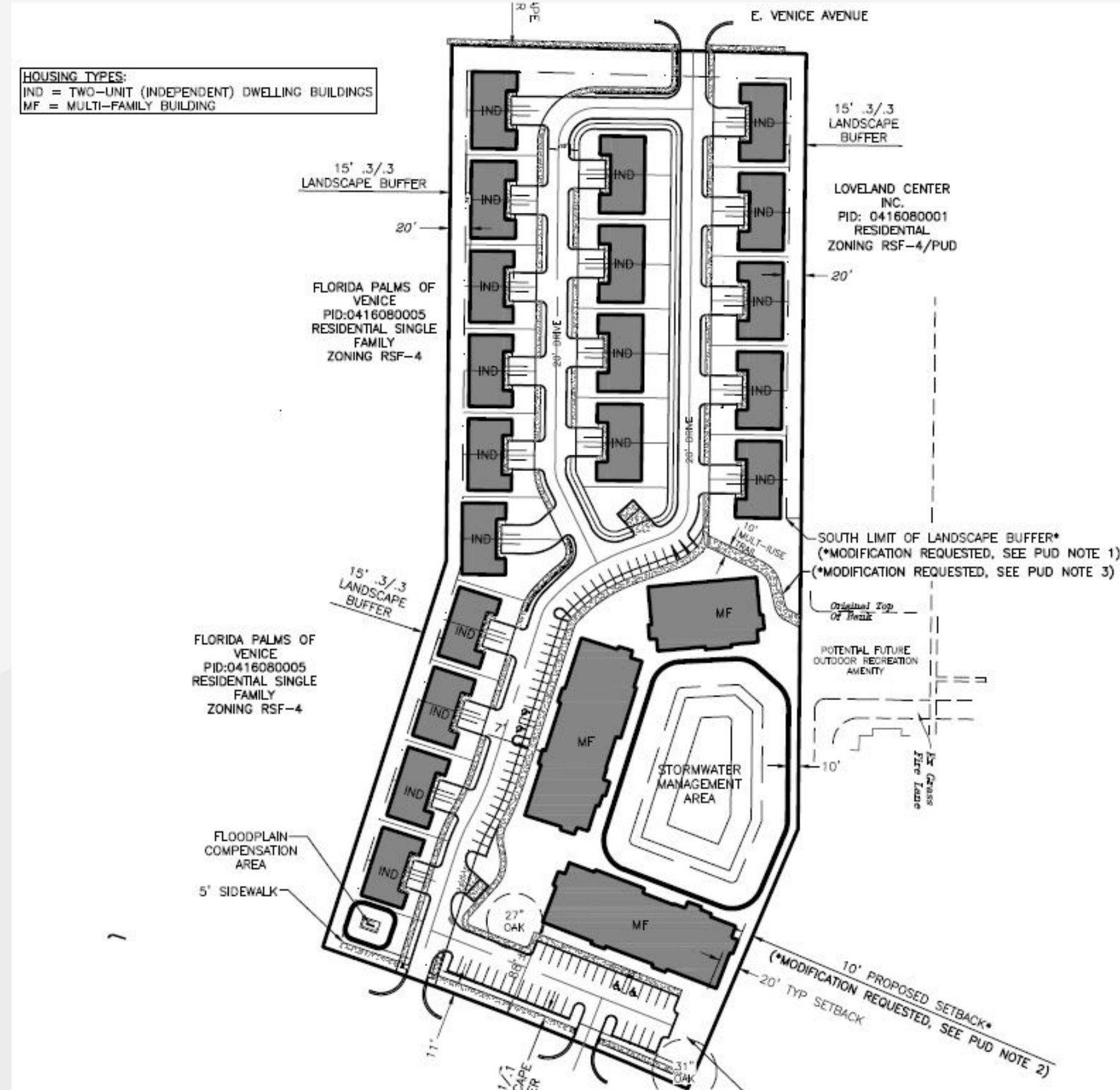
# INDEPENDENCE VILLAS AT LOVELAND VILLAGE

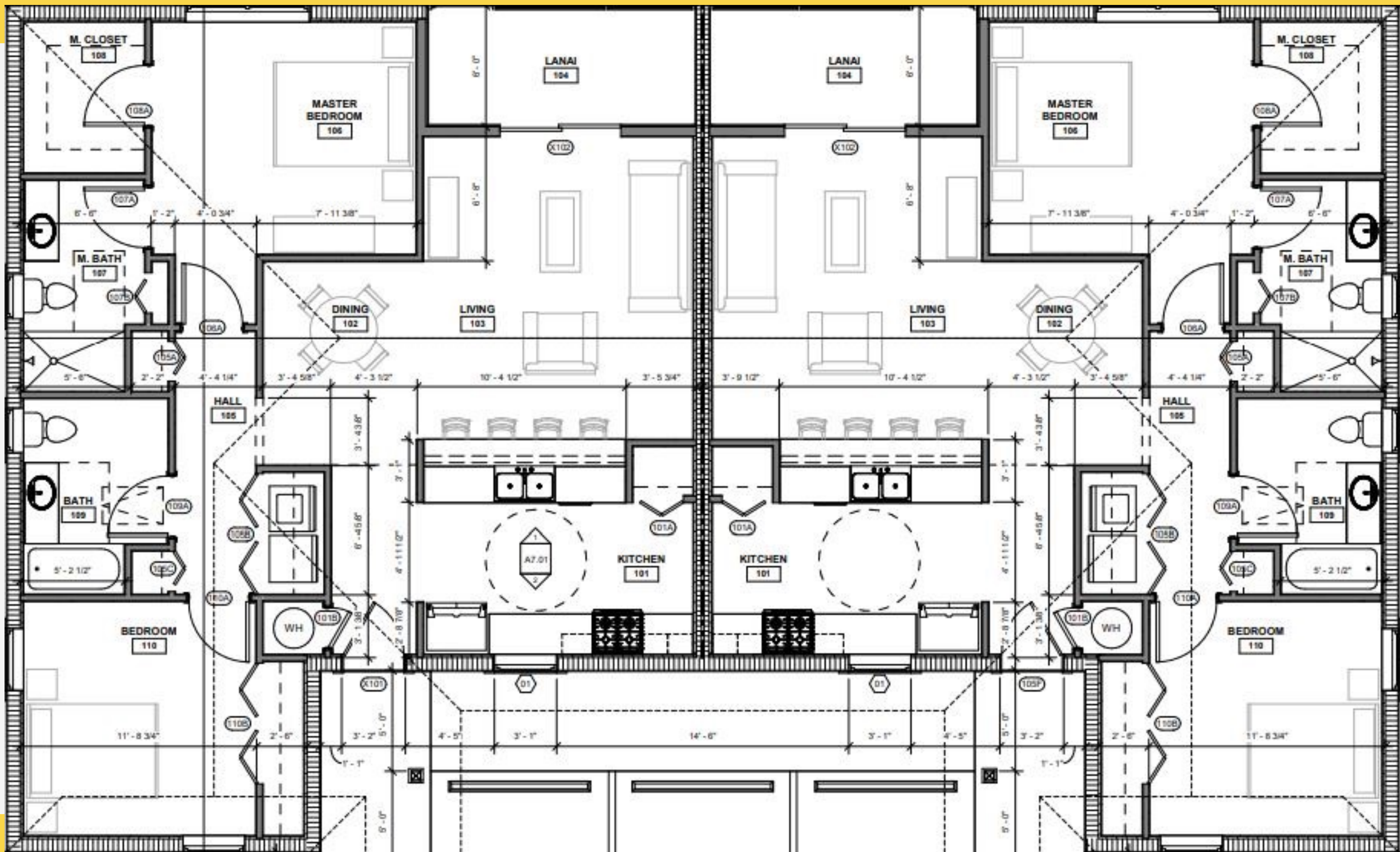
To be truly inclusive, individuals with intellectual and developmental disabilities will live in 40% of the available units and partner families will inhabit 60% of the units.

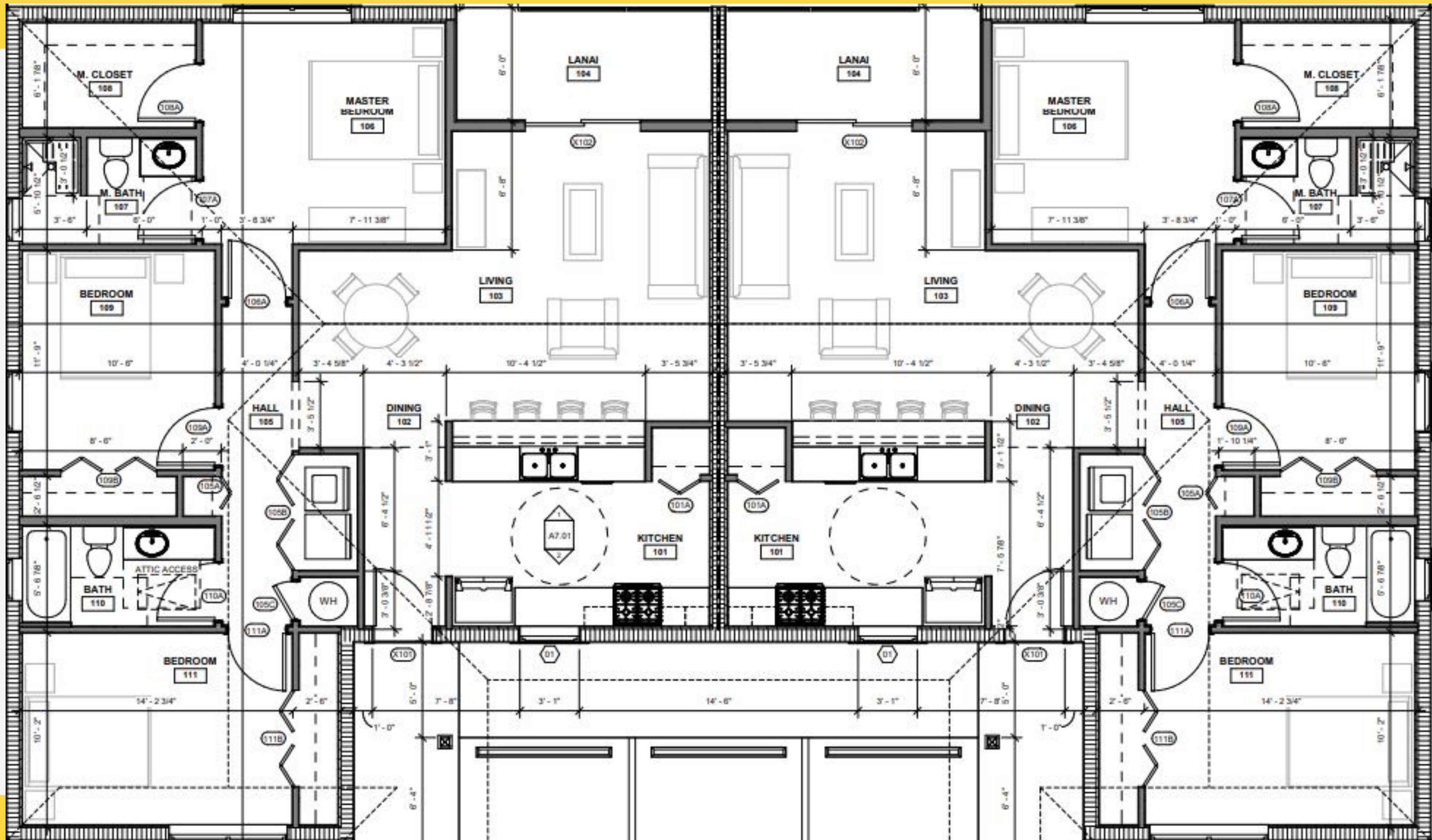


# INDEPENDENCE VILLAS

## AT LOVELAND VILLAGE







# INDEPENDENCE VILLAS AT LOVELAND VILLAGE







# HOME OF YOUR OWN

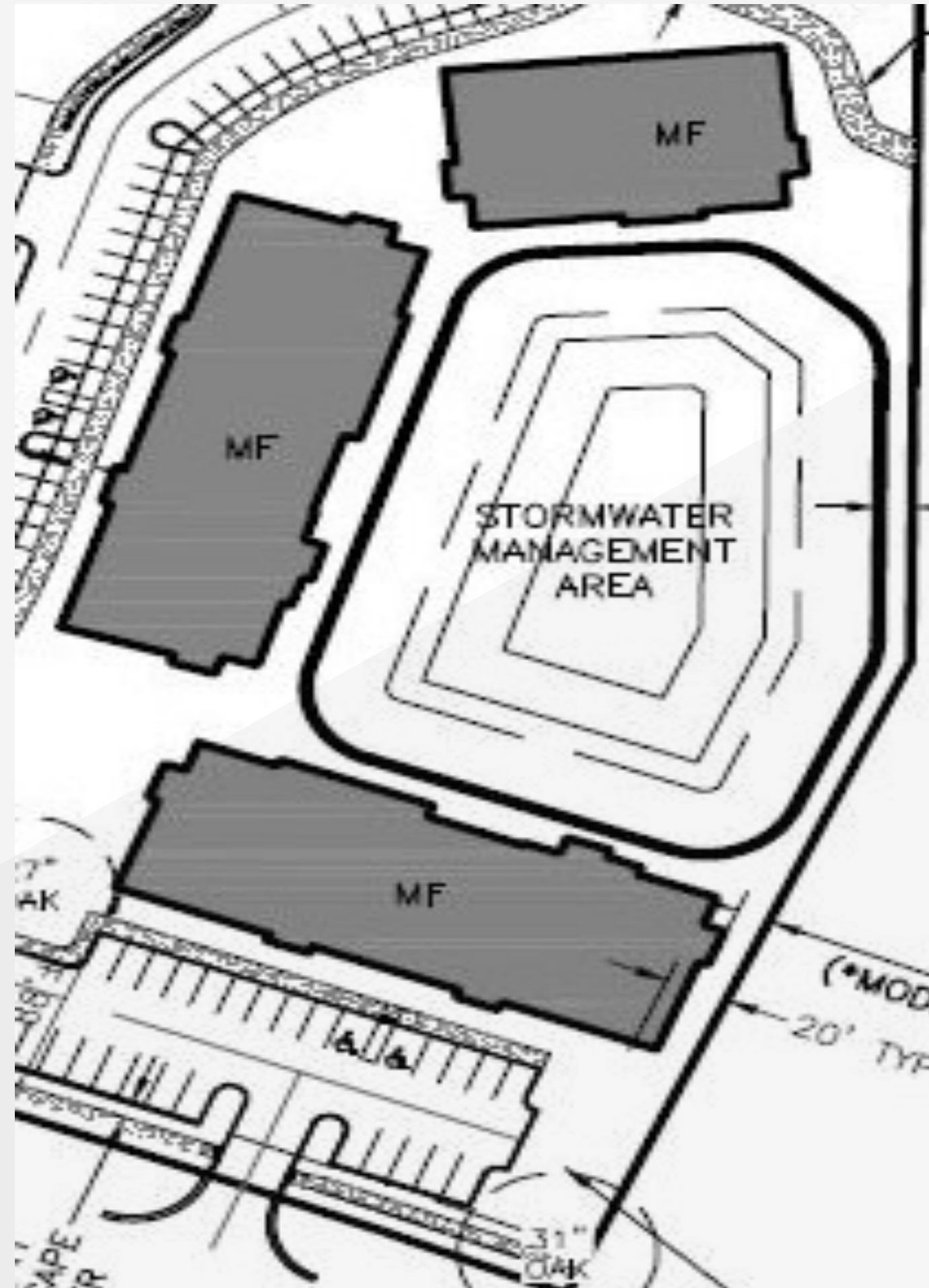
## Equality Lofts at Loveland Village

- 84 one- and two-bedroom apartments in three 3-story buildings
- Individuals with IDD and their caregivers
- Seniors at <65% Annual Median Income (AMI)
- No higher than \$900-\$1,000 per month rent



# EQUALITY LOFTS

AT LOVELAND  
VILLAGE



# EQUALITY LOFTS

## AT LOVELAND VILLAGE



4 SOUTH  
3/32" = 1'-0"

# EQUALITY LOFTS

## AT LOVELAND VILLAGE



# EQUALITY LOFTS

1 BR at LOVELAND VILLAGE



# EQUALITY LOFTS

2 BR at LOVELAND VILLAGE



# EQUALITY LOFTS

AT LOVELAND VILLAGE



# EQUALITY LOFTS

## AT LOVELAND VILLAGE





# EQUALITY LOFTS

## AT LOVELAND VILLAGE



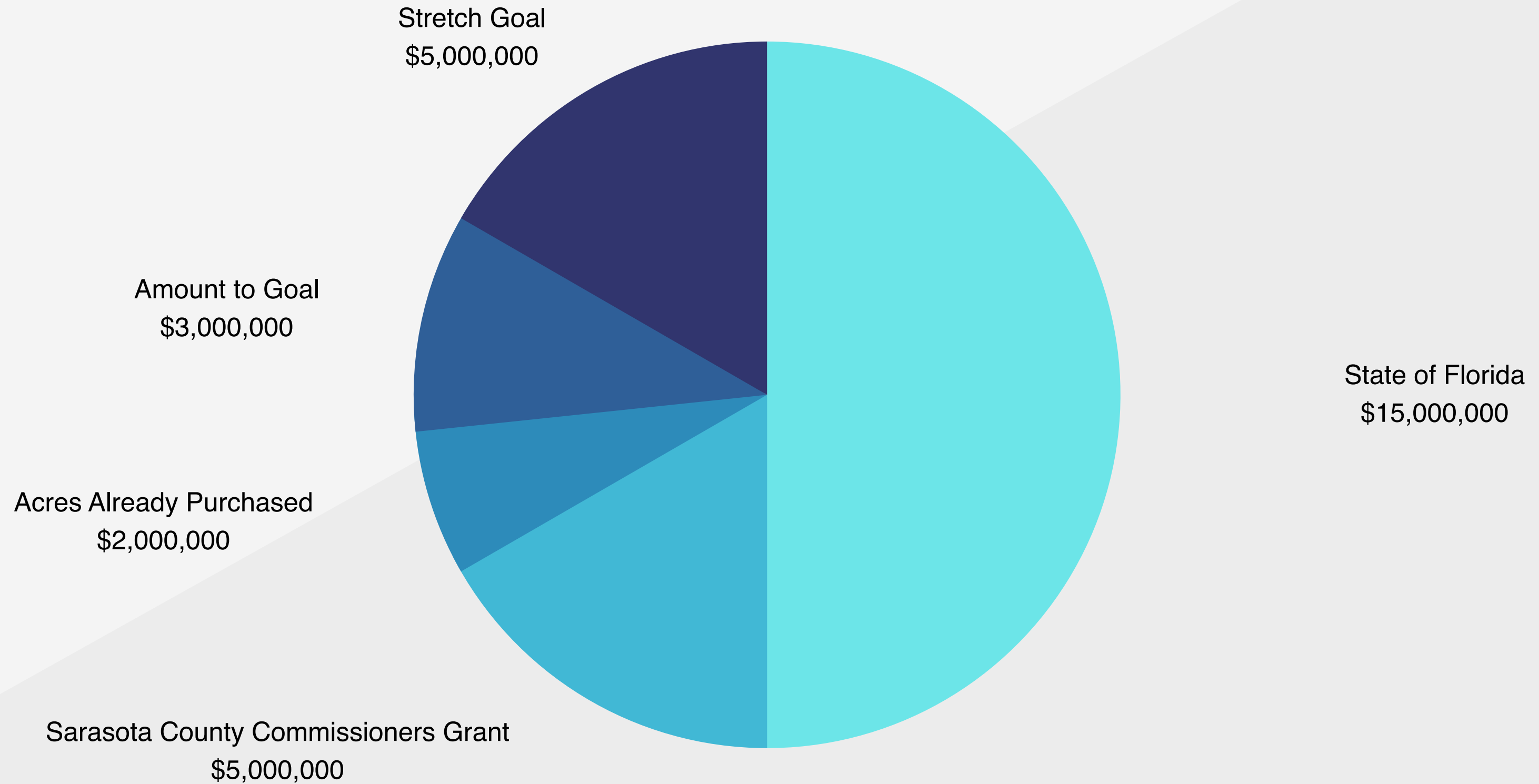
# EQUALITY LOFTS

## AT LOVELAND VILLAGE



# GOAL

\$24,350,000





# OUR TIME IS NOW

Help our families expand their horizons by supporting Loveland's dream through naming a common space, lane, or building



# OUR TIME IS NOW

2024

Break Ground



2025

Complete First  
Complex



2026

Grand Opening





# Naming Opportunities

# INDEPENDENCE VILLAS

## AT LOVELAND VILLAGE

16 Villas for Individuals with Intellectual and Developmental Disabilities

Four \$1,160,000

Two \$580,000

One Villa \$295,000



# EQUALITY LOFTS

## AT LOVELAND VILLAGE

34 Lofts for Individuals with I/DD

50 Lofts for Income-restricted Seniors

One Loft Building \$1,160,000

Lake \$700,000

Walking Trail \$100,000

Additional naming opportunities available





# LOVELAND CREATES

Investment in **The Visual and Performing Arts and Entrepreneurship**

## Performing Arts Center \$1M

- Theatre \$500,000
- Scene Shop \$250,000
- Lobby \$75,000
- Covered Entrance \$25,000

## Visual Center \$1M

- Gallery \$50,000
- Teaching Studio \$40,000
- Store \$25,000
- Additional opportunities available



# Recognition and Giving

# Recognition and Giving Societies



Donations and sponsorships will be recognized on the scrolling monitor in the Loveland Venice Lobby

Permanent Donor Recognition will be reserved for those who name a space. Donor names will be featured on our website.

Major donors and corporate partners will also receive event shout-outs, special invitations to construction milestones, mentions in collateral materials and e-communications to the public.

- ▶ Heart \$500,000+
- ▶ Freedom \$250,000+
- ▶ Equality \$100,000+
- ▶ Independence \$75,000+
- ▶ Premiere \$50,000+
- ▶ Center Stage \$25,000+
- ▶ Entrepreneur \$10,000+



# ○ ○ ○ ○ Credentials

---

Bylaws available upon request

Certificate of Exemption available upon request

Loveland Center, Inc., is a 501(c)3 organization (EIN 59-1011392) registered with the State of Florida (CH-633)

Professional Affiliations Agency for Persons with Disabilities, National Alliance for Direct Support Providers, Certified Medicaid Provider

Partnerships Gulf Coast Community Foundation, Charlotte County Foundation, Manatee County Foundation, Community Foundation of Sarasota County, Wilson-Wood Foundation, Suncoast Charities, and Suncoast Foundation

Awards and Accolades Venice Gondolier-Sun Business Connections Top 40 Businesses 2023

---



# WAYS TO GIVE

Loveland Center makes it easy for businesses, foundations, families, and individual donors to connect. Consider the following ways to give as you plan your philanthropic gifts for this and coming years:

Bequests  
IRA Charitable Distribution  
Charitable Remainder Trust  
Donor-advised Fund  
Appreciated Securities  
Employer Matching

Irrevocable estate gift commitments are welcome and will be recognized as campaign contributions.

Your gift anticipates initiatives that Loveland Center leaders and our community haven't even dreamed of yet.



---

# THANK YOU

From all of us @Loveland



[info@lovelandcenter.org](mailto:info@lovelandcenter.org)



941.493.0016



[www.LovelandCenter.org](http://www.LovelandCenter.org)

